

INDUSTRY REPORT

PROFESSIONAL SERVICES

DUPAGE COUNTY, ILLINOIS



Spotlight Summary 3

Industry Snapshot 4

Staffing Pattern 5

Employment Distribution by Type 6

Establishments 7

Sector Strategy Pathways..... 8

Postsecondary Programs Linked to Professional Svc. (Chmura Cluster) 9

DuPage County, Illinois Regional Map 10

Industry Definition 11

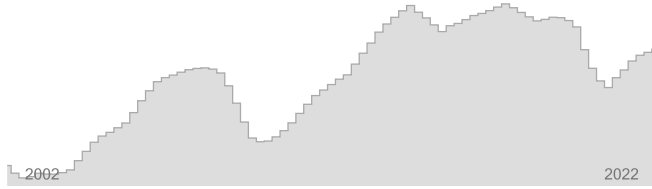
Data Notes..... 14

FAQ..... 14

Spotlight Summary

Professional Svc. (Chmura Cluster)
DuPage County, Illinois – 2022Q3

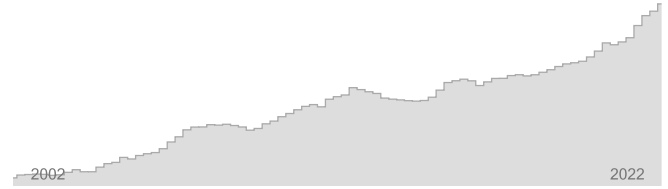
EMPLOYMENT



145,755

Regional employment / **25,751,279** in the nation

WAGES

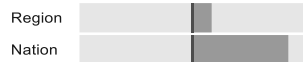


\$93,141

Avg Wages per Worker / **\$92,155** in the nation

0.4% ↑

Avg Ann % Change Last 10 Years / **+2.0%** in the U.S.



22.9%

% of Total Employment / **16.1%** in the U.S.

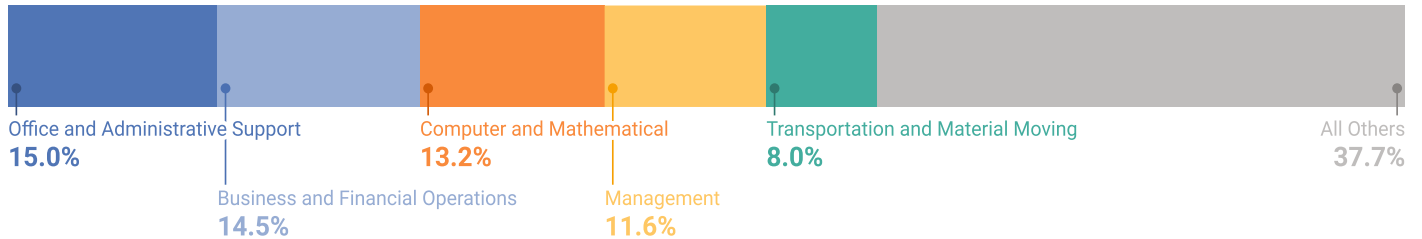


2.6% ↑

Avg Ann % Change Last 10 Years / **+4.1%** in the U.S.



TOP OCCUPATION GROUPS



TOP INDUSTRIES

Avg Ann % Change in Employment, Last 10 Years

1.9% ↑



Temporary Help Services

-2.6% ↓



Corporate, Subsidiary, and Regional Managing Offices

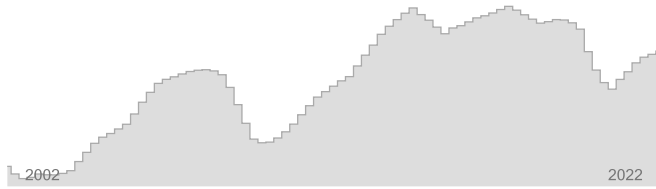
-0.2% ↓



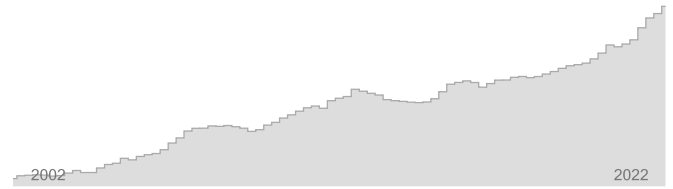
Computer Systems Design Services

Industry Snapshot

EMPLOYMENT



WAGES

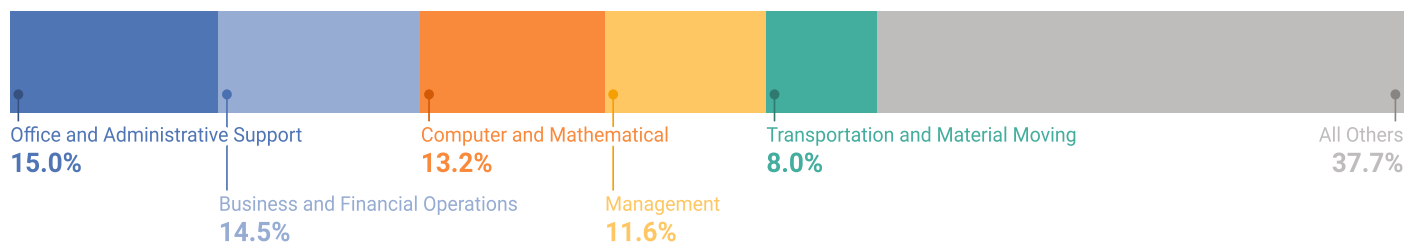


6-Digit Industry	Empl	Avg Ann Wages	LQ	5yr History	Annual Demand	Forecast Ann Growth
Temporary Help Services	21,321	\$45,662	1.72		2,406	-0.6%
Corporate, Subsidiary, and Regional Managing Offices	18,348	\$167,400	1.97		1,635	-0.5%
Computer Systems Design Services	9,411	\$123,865	2.03		860	1.1%
Custom Computer Programming Services	8,505	\$145,129	1.88		776	1.1%
Janitorial Services	7,137	\$33,087	1.30		897	-0.7%
Administrative Management and General Management Consulting Services	5,775	\$99,571	1.56		567	0.5%
Professional Employer Organizations	4,847	\$63,561	2.84		518	-0.5%
Engineering Services	4,677	\$110,963	1.01		359	-0.7%
Research and Development in the Physical, Engineering, and Life Sciences (except Nanotechnology and Biotechnology)	4,672	\$123,940	2.21		416	0.5%
Landscaping Services	4,146	\$58,269	1.03		487	-0.6%
Remaining Component Industries	56,920	\$85,584	1.30		5,904	-0.3%
Professional Svc. (Chmura Cluster)	145,755	\$93,141	1.43		14,891	-0.1%

Employment is one of the broadest and most timely measures of a region's economy. Fluctuations in the number of jobs shed light on the health of an industry. A growing employment base creates more opportunities for regional residents and helps a region grow its population.

Since wages and salaries generally compose the majority of a household's income, the annual average wages of a region affect its average household income, housing market, quality of life, and other socioeconomic indicators.

Staffing Pattern



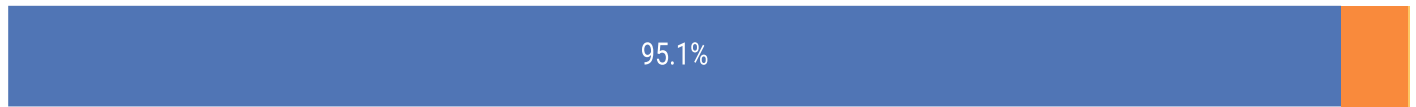
6-digit Occupation	Empl	Avg Ann Wages	Annual Demand
Laborers and Freight, Stock, and Material Movers, Hand	7,028	\$33,300	948
Software Developers	6,655	\$111,100	567
Janitors and Cleaners, Except Maids and Housekeeping Cleaners	6,093	\$33,500	788
General and Operations Managers	4,889	\$143,200	432
Customer Service Representatives	4,715	\$40,500	606
Security Guards	3,989	\$36,000	536
Office Clerks, General	3,941	\$41,200	435
Management Analysts	3,842	\$117,200	368
Accountants and Auditors	3,645	\$82,500	297
Sales Representatives of Services, Except Advertising, Insurance, Financial Services, and Travel	3,215	\$74,100	355
Remaining Component Occupations	97,731	\$66,600	9,418
Total	145,742		



 The mix of occupations points to the ability of a region to support an industry and its flexibility to adapt to future demand. Industry wages are a component of the cost of labor for regional employers.

Employment Distribution by Type

The table below shows the employment mix by ownership type for Professional Svc. (Chmura Cluster) for DuPage County, Illinois. Four of these ownership types — federal, state, and local government and the private sector — together constitute “Covered Employment” (employment covered by the Unemployment Insurance programs of the United States and reported via the Quarterly Census of Employment and Wages).

“Self-Employment” refers to unincorporated self-employment and represents workers whose primary job is self-employment (that is, these data do not include workers whose primary job is a wage-and-salary position that is supplemented with self-employment).



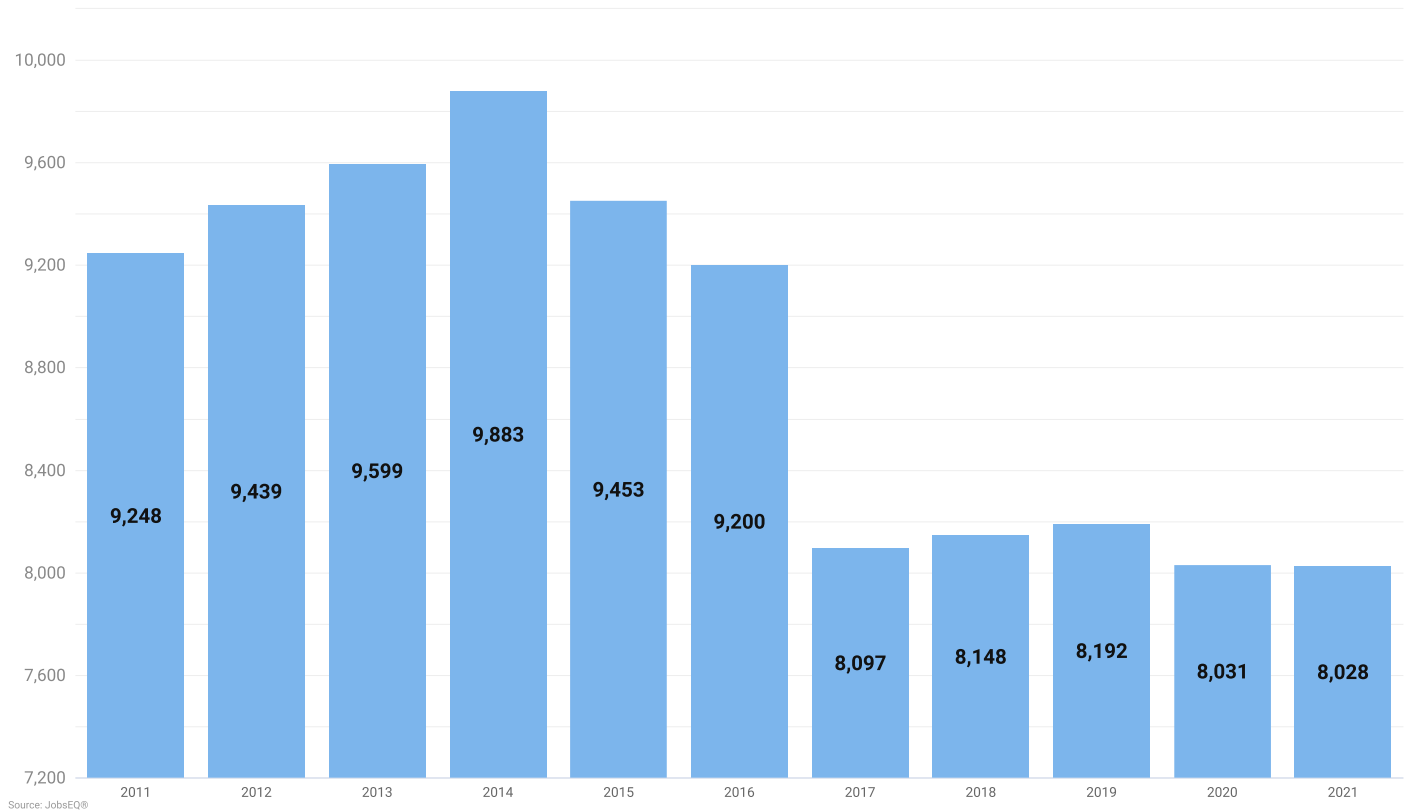
	Empl	%
 Private	138,549	95.1%
 Self-Employment	7,104	4.9%
 Local Government	101	0.1%


Source: JobsEQ®

 Strong entrepreneurial activity is indicative of growing industries. Using self-employment as a proxy for entrepreneurs, a higher share of self-employed individuals within a regional industry points to future growth.

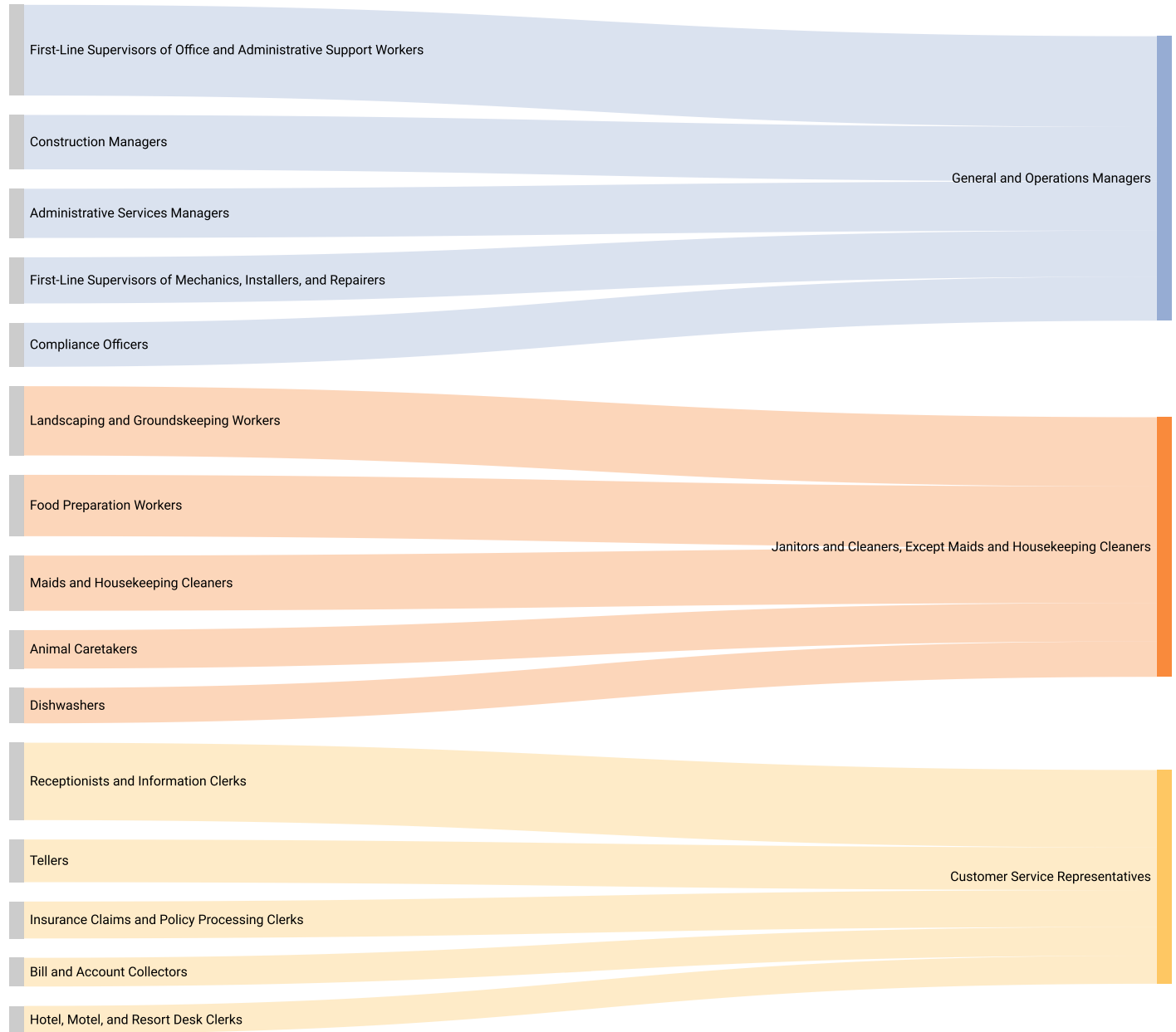
Establishments


In 2021, there were 8,028 Professional Svc. (Chmura Cluster) establishments in DuPage County, Illinois (per covered employment establishment counts), a decrease from 9,248 establishments ten years earlier in 2011.



 New business formations are an important source of job creation in a regional economy, spurring innovation and competition, and driving productivity growth. Establishment data can provide an indicator of growth in businesses by counting each single location (such as a factory or a store) where business activity takes place, and with at least one employee.

Sector Strategy Pathways





 The graphics on this page illustrate relationships and potential movement (from left to right) between occupations that share similar skill sets. Developing career pathways as a strategy promotes industry employment growth and workforce engagement.

Postsecondary Programs Linked to Professional Svc. (Chmura Cluster)

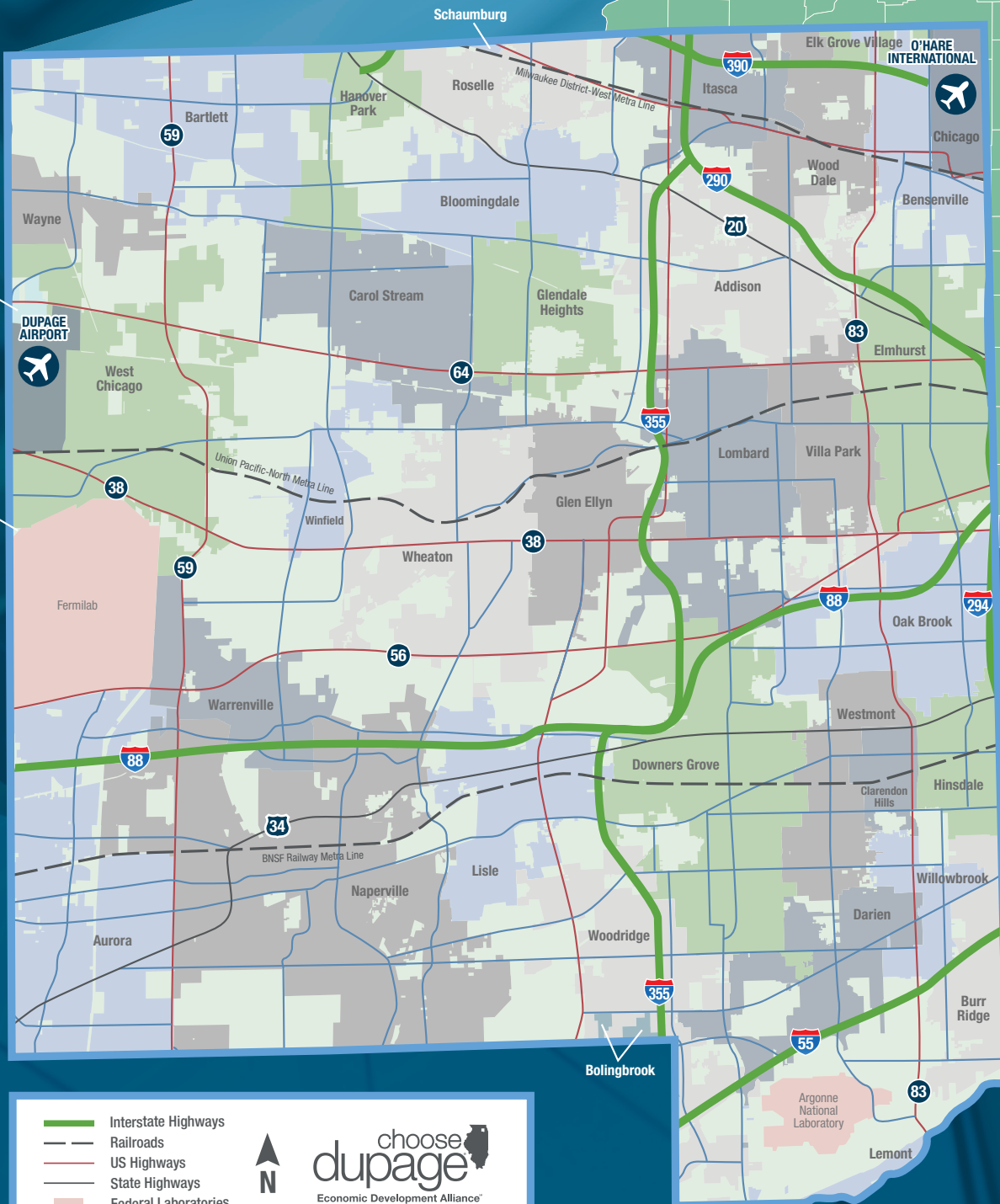
Program	Awards
Chamberlain University-Illinois	
Family Practice Nurse/Nursing	2,467
Nursing Practice	565
Registered Nursing/Registered Nurse	9,596
College of DuPage	
Data Entry/Microcomputer Applications, General	55
Medical Transcription/Transcriptionist	36
DeVry University-Illinois	
Accounting and Finance	186
Business Administration and Management, General	1,057
Computer Systems Networking and Telecommunications	329
Health Information/Medical Records Technology/Technician	2,222
Information Technology	423

Source: [JobsEQ®](#)

-  The number of graduates from postsecondary programs in the region identifies the pipeline of future workers as well as the training capacity to support industry demand.
-  Among postsecondary programs at schools located in DuPage County, Illinois, the sampling above identifies those most linked to occupations relevant to Professional Svc. (Chmura Cluster). For a complete list see JobsEQ®, <http://www.chmuraecon.com/jobseq>

DUPAGE COUNTY

THE PROVEN AND PREMIER
GLOBAL BUSINESS LOCATION.



- Interstate Highways
- Railroads
- US Highways
- State Highways
- Federal Laboratories

Economic Development Alliance

Industry Definition

Professional Svc. (Chmura Cluster) is defined as the following NAICS industries:

Code	Description
517111	Wired Telecommunications Carriers
517112	Wireless Telecommunications Carriers (except Satellite)
517121	Telecommunications Resellers
517122	Agents for Wireless Telecommunications Services
517410	Satellite Telecommunications
517810	All Other Telecommunications
518210	Computing Infrastructure Providers, Data Processing, Web Hosting, and Related Services
532111	Passenger Car Rental
532112	Passenger Car Leasing
532120	Truck, Utility Trailer, and RV (Recreational Vehicle) Rental and Leasing
532210	Consumer Electronics and Appliances Rental
532281	Formal Wear and Costume Rental
532282	Video Tape and Disc Rental
532283	Home Health Equipment Rental
532284	Recreational Goods Rental
532289	All Other Consumer Goods Rental
532310	General Rental Centers
532411	Commercial Air, Rail, and Water Transportation Equipment Rental and Leasing
532412	Construction, Mining, and Forestry Machinery and Equipment Rental and Leasing
532420	Office Machinery and Equipment Rental and Leasing
532490	Other Commercial and Industrial Machinery and Equipment Rental and Leasing
541110	Offices of Lawyers
541120	Offices of Notaries
541191	Title Abstract and Settlement Offices
541199	All Other Legal Services
541211	Offices of Certified Public Accountants
541213	Tax Preparation Services
541214	Payroll Services
541219	Other Accounting Services
541310	Architectural Services
541320	Landscape Architectural Services
541330	Engineering Services
541340	Drafting Services
541350	Building Inspection Services
541360	Geophysical Surveying and Mapping Services
541370	Surveying and Mapping (except Geophysical) Services
541380	Testing Laboratories and Services
541410	Interior Design Services
541420	Industrial Design Services
541430	Graphic Design Services
541490	Other Specialized Design Services
541511	Custom Computer Programming Services
541512	Computer Systems Design Services
541513	Computer Facilities Management Services
541519	Other Computer Related Services
541611	Administrative Management and General Management Consulting Services
541612	Human Resources Consulting Services
541613	Marketing Consulting Services

Professional Svc. (Chmura Cluster) is defined as the following NAICS industries:

Code	Description
541614	Process, Physical Distribution, and Logistics Consulting Services
541618	Other Management Consulting Services
541620	Environmental Consulting Services
541690	Other Scientific and Technical Consulting Services
541713	Research and Development in Nanotechnology
541714	Research and Development in Biotechnology (except Nanobiotechnology)
541715	Research and Development in the Physical, Engineering, and Life Sciences (except Nanotechnology and Biotechnology)
541720	Research and Development in the Social Sciences and Humanities
541810	Advertising Agencies
541820	Public Relations Agencies
541830	Media Buying Agencies
541840	Media Representatives
541850	Indoor and Outdoor Display Advertising
541860	Direct Mail Advertising
541870	Advertising Material Distribution Services
541890	Other Services Related to Advertising
541910	Marketing Research and Public Opinion Polling
541921	Photography Studios, Portrait
541922	Commercial Photography
541930	Translation and Interpretation Services
541940	Veterinary Services
541990	All Other Professional, Scientific, and Technical Services
551111	Offices of Bank Holding Companies
551112	Offices of Other Holding Companies
551114	Corporate, Subsidiary, and Regional Managing Offices
561110	Office Administrative Services
561210	Facilities Support Services
561311	Employment Placement Agencies
561312	Executive Search Services
561320	Temporary Help Services
561330	Professional Employer Organizations
561410	Document Preparation Services
561421	Telephone Answering Services
561422	Telemarketing Bureaus and Other Contact Centers
561431	Private Mail Centers
561439	Other Business Service Centers (including Copy Shops)
561440	Collection Agencies
561450	Credit Bureaus
561491	Repossession Services
561492	Court Reporting and Stenotype Services
561499	All Other Business Support Services
561510	Travel Agencies
561520	Tour Operators
561591	Convention and Visitors Bureaus
561599	All Other Travel Arrangement and Reservation Services
561611	Investigation and Personal Background Check Services
561612	Security Guards and Patrol Services
561613	Armored Car Services
561621	Security Systems Services (except Locksmiths)
561622	Locksmiths

Professional Svc. (Chmura Cluster) is defined as the following NAICS industries:

Code	Description
561710	Exterminating and Pest Control Services
561720	Janitorial Services
561730	Landscaping Services
561740	Carpet and Upholstery Cleaning Services
561790	Other Services to Buildings and Dwellings
561910	Packaging and Labeling Services
561920	Convention and Trade Show Organizers
561990	All Other Support Services

Data Notes

- Industry employment and wages (including total regional employment and wages) are as of 2022Q3 and are based upon BLS QCEW data, imputed by Chmura where necessary, and supplemented by additional sources including Census ZBP data. Employment forecasts are modeled by Chmura and are consistent with BLS national-level 10-year forecasts.
- Occupation employment is as of 2022Q3 and is based on industry employment and local staffing patterns calculated by Chmura and utilizing BLS OEWS data. Wages by occupation are as of 2022, utilizing BLS OEWS data and imputed by Chmura.
- GDP is derived from BEA data and imputations by Chmura. Productivity (output per worker) is calculated by Chmura using industry employment and wages as well as GDP and BLS output data. Supply chain modeling including purchases by industry are developed by Chmura.
- Postsecondary awards are per the NCES and are for the 2020-2021 academic year.
- Establishment counts are per the BLS QCEW data.
- Figures may not sum due to rounding.

FAQ

What is (LQ) location quotient?

Location quotient is a measurement of concentration in comparison to the nation. An LQ of 1.00 indicates a region has the same concentration of an industry (or occupation) as the nation. An LQ of 2.00 would mean the region has twice the expected employment compared to the nation and an LQ of 0.50 would mean the region has half the expected employment in comparison to the nation.

What is annual demand?

Annual demand is a of the sum of the annual projected growth demand and separation demand. Separation demand is the number of jobs required due to separations—labor force exits (including retirements) and turnover resulting from workers moving from one occupation into another. Note that separation demand does not include all turnover—it does not include when workers stay in the same occupation but switch employers. Growth demand is the increase or decrease of jobs expected due to expansion or contraction of the overall number of jobs.

What is the difference between industry wages and occupation wages?

Industry wages and occupation wages are estimated via separate data sets, often the time periods being reported do not align, and wages are defined slightly differently in the two systems (for example, certain bonuses are included in the industry wages but not the occupation wages). It is therefore common that estimates of the average industry wages and average occupation wages in a region do not match exactly.